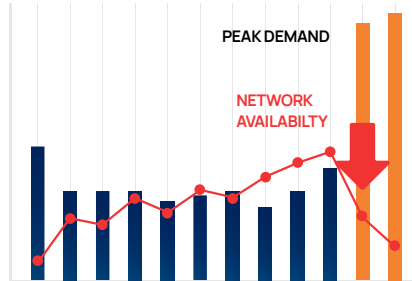


Airgap Network Experience

Network Performance and Intelligence



Network Performance is Revenue Performance

Traffic surges can overwhelm enterprise networks, brief peak downtimes carry significant financial implications, and scaling revenue often clashes with network constraints. Over-provisioning becomes a go-to solution in the face of unpredictable demands, all while the complexity of network maintenance and its costs continue to rise. Enterprises need a business-ready network.

Introducing Airgap Network Performance

Optimize network performance at scale, with precise KPI tracking and an intuitive interface



Network Availability

Discover devices and servers in real-time, visualize your network live, playback historical logs, and customize your monitoring metrics



Programmable Data Pipeline

Measure KPI impacts, craft custom metrics, harness integrated statistical and ML insights, and receive precise, actionable alerts



Proven Architecture

Crafted by ex-Google engineers, our cloud-based architecture supports millions of MPM, high customization, and support by Airgap

Customers Trust Airgap with High Scale Networks

Millions of MPM, transformed into actionable insights

Top 20 Retailer

“Other tools available in the market didn’t scale when we are talking about diverse network elements of 30K+ devices.”

40K DEVICES | 4 MILLION MPM



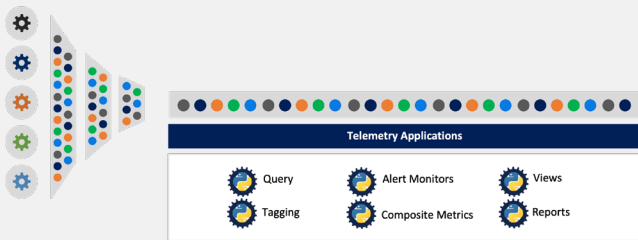
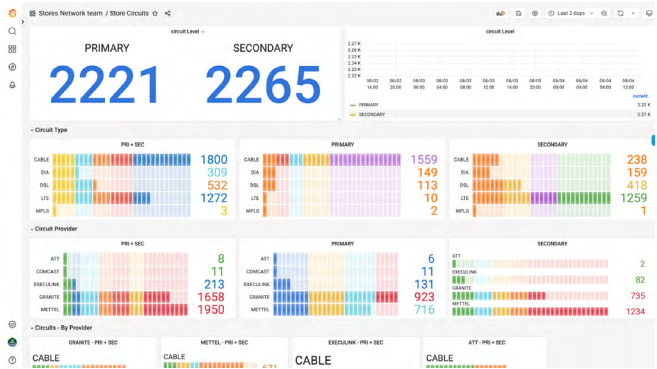
“We have gone from exerting a lot of effort with very little impact to very little effort having a large impact.”

5K+ DEVICES | 10 MILLION MPM

Visualize Everything

Dive deep into a live representation of your network interface and loading.

Beyond just real-time monitoring, harness the power of integrated statistical and ML models to anticipate network behavior. Predictive insights empower network operators to preempt congestion and optimize performance, before network and business availability are compromised.

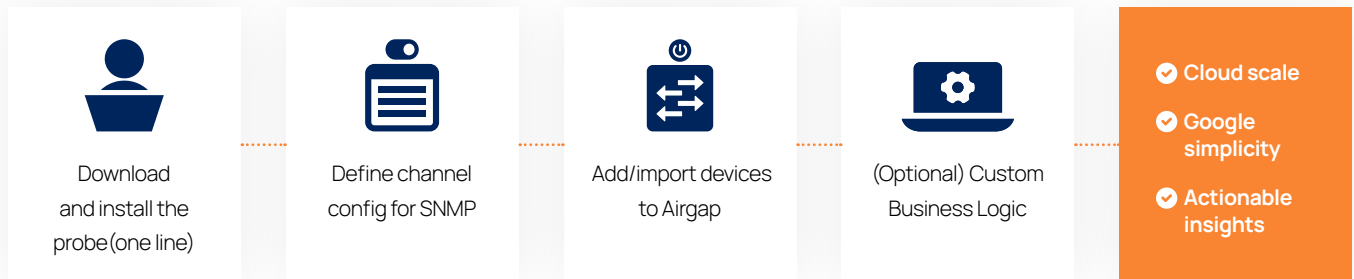


Micro-services architecture for massive scale

Programmable Telemetry Data Pipeline

- Search your network like you search the web.
- Integrated Grafana service enables instant & customizable dashboards.
- End manual & offline documentation with auto-mapping & real-time topology.
- Network-aware algorithms & business-logic trigger root-cause alerts.

Installs in Minutes with Immediate Results



Airgap Benefits

- Scales to millions of MPM
- Instant, real-time visualization
- Historical playback
- Customized views/alerts
- Cloud-based agility
- Predictive ML insights
- Fast, easy installation